

DESIGN N°

10149

BEGINNER



SIRDAR

WEST YORKSHIRE
Est_1880



WEST YORKSHIRE
BRITISH
DESIGN,
EXPERTISE AND
CRAFTSMANSHIP
TRUSTED BY
GENERATIONS
OF HAND
KNITTERS
EST_1880

WE TRIPLE-CHECK
OUR PATTERNS TO
GUARANTEE SUCCESS
WHEN YOU USE
SIRDAR YARNS

HAWORTH TWEED

DOUBLE KNITTING

81-137cm
32-54in

MORE COLOURS
ON BACK PAGE



SIRDAR

WEST YORKSHIRE
Est_1880

HAWORTH TWEED

DOUBLE KNITTING

Established in West Yorkshire in 1880, Sirdar is a British yarn company with a rich hand knitting heritage. Generations of families have grown up wearing Sirdar hand knitting yarns and designs.

Each season, we complement your favourite Sirdar classics with the latest yarn innovations and effects for fashionable knits. And we triple check every stylish Sirdar pattern to guarantee a successful knit with the recommended Sirdar yarn.

Sirdar Haworth Tweed knits into a soft tweed-like fabric with the Yorkshire Dales at its heart. The richly nepped shades give a rustic texture to plain knits and add interest to textured stitches.



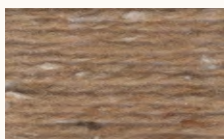
“Knitting and walking with friends are my two favourite hobbies. I can’t wait to finish my tweedy knit and head out into the countryside, I’ll be stylish and warm as toast.”

TRY THESE SHADES

Turn to the back page to choose your favourite.



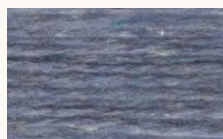
906 West Riding Red



910 Harewood Chestnut



901 Hepworth Slate



904 Calder Sky

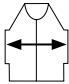
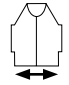
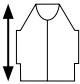
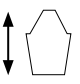



Sweater
shade 906 West Riding Red



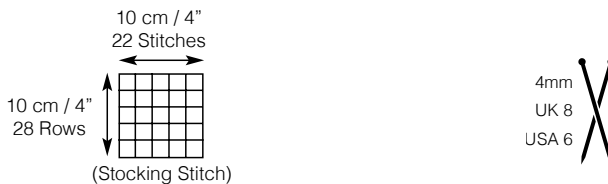
MEASUREMENTS

Follow the pattern instructions for your size

Size	S	M	L	XL	XXL	XXXL
Chest 	81/86 cm 32/34"	91/97 cm 36/38"	102/107 cm 40/42"	112/117 cm 44/46"	122/127 cm 48/50"	132/137 cm 52/54"
Width 	100 cm 39½"	111 cm 43¾"	122 cm 48"	131 cm 51½"	142 cm 56"	151 cm 59½"
Full Length 	58 cm 22¾"	60 cm 23¾"	62 cm 24½"	64 cm 25¼"	66 cm 26"	68 cm 26¾"
Sleeve Length 	46 cm 18"	46 cm 18"	47 cm 18½"	48 cm 19"	48 cm 19"	48 cm 19"
Yarn* No Balls 	5	6	7	7	8	9
Yarn You also need	F007 Haworth Tweed, DK, 50g, shade 906 West Riding Red. I Pair of 4mm (UK8 - USA6) Knitting Needles and I Pair of 3¼mm (UK10 - USA3) Knitting Needles. Cable Needle and Stitch Holders.					

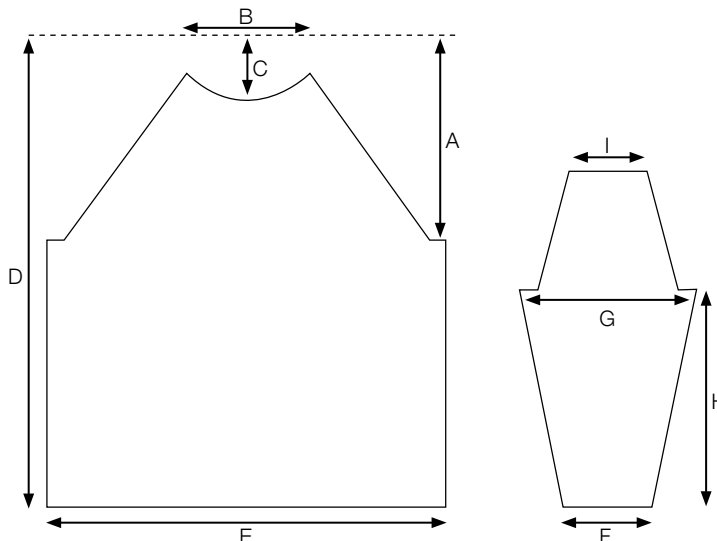
*Average number of balls required when you use the specified Sirdar yarn and tension shown below

TENSION & NEEDLES



PIECE MEASUREMENTS

- A 21 [23:25:26:27:28]cm,
(8¼ [9:9¼:10¼:10¾:11"])
(includes half of sleeve top)
- B 19 [20:20:21:21:21]cm,
(7½ [8:8:8¼:8¼:8¼"])
- C 7 [7:8:8:8:8]cm,
(2¾ [2¾:3:3:3:3"])
(includes half of sleeve top)
- D 58 [60:62.5:63.5:65.5:68]cm,
(22¾ [23¾:24½:25:25¾:26¾"])
(includes half of sleeve top)
- E 50 [55.5:61:65.5:71:75.5]cm,
(19¾ [21¾:24:25¾:28:29¾"])
- F 20 [21:22:23:24:25]cm,
(8 [8¼:8¾:9:9½:9¾"])
- G 35 [36:40:42:44:46]cm,
(13¾ [14:15¾:16½:17¼:18"])
- H 46 [46:47:48:48:48]cm,
(18 [18:18½:19:19:19"])
- I 8 [8:9:9:9.5]cm,
(3 [3:3½:3½:3¾"])



STITCHES & ABBREVIATIONS

alt - alternate
beg - beginning
cm - centimetres
CN - cable needle
cont - continue
DK - double knitting
dec - decrease(ing)
foll - following
g - grammes
in - inch(es)
inc - increase(ing)
k - knit
m1 - pick up loop between last and next stitch and knit into the back of this loop
mm - millimetres
p - purl
pssso - pass slipped stitch over
rs - right side
rem - remain(ing)
rep - repeat
sl - slip 1 stitch knitways
st(s) - stitch(es)
tog - together
ws - wrong side
0 - no rows
D2L - slip next 2 stitches to front on CN, knit 1st stitch from CN together with 1st stitch from left hand needle, knit 2nd stitch from CN together with next stitch on left hand needle.
D2R - slip next 2 stitches to back on CN, knit 1st stitch from left hand needle together with 1st stitch from CN, knit next stitch from left hand needle together with 2nd stitch on CN.

BACK

Using 3¼mm needles and thumb method cast on 131 [145:157:171:183:197] sts.
1st Row. * K1, p1, rep from * to last st, k1.
2nd Row. P1, * k1, p1, rep from * to end.
1st and 2nd rows will now be referred to as 1x1 rib.
Work in 1x1 rib for 6cm, (2½in), ending with a rs row.
Next Row. P5 [6:12:7:13:8], p2tog, (p4, p2tog) 20 [22:22:26:26:30] times, p4 [5:11:6:12:7].
110 [122:134:144:156:166] sts.

Change to 4mm needles and proceed as follows:-
1st Row. Knit.
2nd Row. Purl.
1st and 2nd rows will now be referred to as st-st (stocking stitch).
Working in st-st (throughout) cont until back measures 37 [37:37:38:39:40]cm, (14½ [14½:14½:15:15½:15¾]in), ending with a ws row.

SHAPE RAGLAN

Cast off 4 [5:5:5:5:6] sts at beg of next 2 rows. 102 [112:124:134:146:154] sts.
1st Row. K2, D2L, knit to last 6 sts, D2R, k2. 98 [108:120:130:142:150] sts.
2nd Row. Purl.
1st and 2nd rows set raglan shapings.
Work 8 [12:18:24:34:38] rows dec 2 sts at each end as before in next and every foll alt row.
82 [84:84:82:74:74] sts. **
Work 40 [40:40:36:28:28] rows dec 2 sts as before at each end of next and every foll 4th row.
42 [44:44:46:46:46] sts.
Leave rem 42 [44:44:46:46:46] sts on a stitch holder.

FRONT

Work as given for Back to **.
Work 30 [30:30:26:18:18] rows dec 2 sts at each end as before in next and every foll 4th row.
50 [52:52:54:54:54] sts.

SHAPE NECK

Next Row. K12, turn, leave rem 38 [40:40:42:42:42] sts on a stitch holder.
Working on these 12 sts only proceed as follows:-
Next Row. P2tog. (neck edge), purl to end. 11 sts.
Next Row. K2, D2L, k3, k2tog. 8 sts.
Next Row. P2tog, purl to end. 7 sts.
Next Row. K5, k2tog. 6 sts.
Next Row. P2tog, p4. 5 sts.
Next Row. K1, D2L. 3 sts.
Next Row. Purl.
Next Row. K1, sl, k1, pssso. 2 sts.
Next Row. P2tog. Fasten off.
With rs facing, working on rem 38 [40:40:42:42:42] sts, slip 26 [28:28:30:30:30] sts onto a stitch holder, rejoin yarn to rem 12 sts and knit to end.
Next Row. Purl to last 2 sts, p2tog (neck edge). 11 sts.
Next Row. K2tog, k3, D2R, k2. 8 sts.
Next Row. Purl to last 2 sts, p2tog. 7 sts.
Next Row. K2tog, k5. 6 sts.

Next Row. P4, p2tog. 5 sts.
Next Row. K1, D2R. 3 sts.
Next Row. Purl.
Next Row. K2tog, k1.
Next Row. P2tog. Fasten off.

SLEEVES (Both alike)

Using 3¼mm needles and thumb method cast on 53 [55:57:59:63:65] sts.
Work in 1x1 rib for 6cm, (2½in), ending with a rs row.
Next Row. P5 [6:3:4:4:5], p2tog, (p4 [4:5:5:4:4], p2tog) 7 [7:7:7:9:9] times, p4 [5:3:4:3:4]. 45 [47:49:51:53:55] sts.
Change to 4mm needles and working in st-st (throughout) inc 1 st at each end of 5th and every foll 6th [6th:4th:4th:4th:4th] row to 63 [73:69:73:81:89] sts.
Inc 1 st at each end of every foll 8th [8th:6th:6th:6th:6th] row to 77 [79:89:93:97:101] sts.
Cont without shaping until sleeve measures 46 [46:47:48:48:48]cm, (18 [18:18½:19:19:19]in) ending with a ws row.

SHAPE RAGLAN

Cast off 4 [5:5:5:5:6] sts at beg of next 2 rows. 69 [69:79:83:87:89] sts.

For 2nd size only
Next Row. Knit.
Next Row. Purl.

For 1st, 4th and 5th sizes only
Next Row. K2, D2L, knit to last 6 sts, D2R, k2. 65 [79:83] sts.
Next Row. Purl.
These 2 rows set raglan shapings.
Work 0 [0:2] rows dec 2 sts as before at each end of 0 [0:1st] row.
65 [79:79] sts.

For all 6 sizes
1st Row. K2, D2L, knit to last 6 sts, D2R, k2. 61 [65:75:75:75:85] sts.
2nd Row. Purl.
3rd Row. Knit.
4th Row. Purl.
These 4 rows set raglan shapings.
Work 44 [48:56:56:56:64] rows dec 2 sts as before at each end of next and every foll 4th row.
17 [17:19:19:19:21] sts.
Leave rem 17 [17:19:19:19:21] sts on a stitch holder.

NECKBAND

Join raglan seams leaving left back raglan open. With rs facing, using

3¼mm needles knit across 17 [17:19:19:19:21] sts left on a stitch holder at top of left sleeve, pick up and knit 9 sts evenly along left side of neck, knit across 26 [28:28:30:30:30] sts left on a stitch holder at front of neck, pick up and knit 9 sts evenly along right side of neck, knit across 17 [17:19:19:19:21] sts left on a stitchholder at top of right sleeve and work across 42 [44:44:46:46:46] sts left on a stitch holder at back of neck as follows:- k21 [22:22:23:23:23], m1, k21 [22:22:23:23:23]. 121 [125:129:133:133:137] sts.
Starting with 2nd row of 1x1 rib work in rib for 4cm, (1½in), ending with a ws row.
Cast off in rib.

TO MAKE UP

Join left back raglan and neckband seams. Join side and sleeve seams. Pin out garment to the measurement given. Cover with damp cloths and leave until dry. See ball band for washing and further care instructions.





DESIGN N° 10146



DESIGN N° 10148



DESIGN N° 10150


SIRDAR
WEST YORKSHIRE
Est. 1880

HAWORTH TWEED

DOUBLE KNITTING

CHOOSE YOUR NEXT
PROJECT



DESIGN N° 10151



DESIGN N° 10152



DESIGN N° 10153



DESIGN N° 10154



DESIGN N° 10155

HAWORTH TWEED

DOUBLE KNITTING

CHOOSE YOUR FAVOURITE COLOUR

906 West Riding Red



910 Harewood Chestnut



901 Hepworth Slate



904 Calder Sky