



DESIGN N°

10500

ADVANCED

FAIR ISLE SNOOD

SIRDAR

WEST YORKSHIRE
Est_1880



WE TRIPLE-CHECK
OUR PATTERNS TO
GUARANTEE SUCCESS
WHEN YOU USE
SIRDAR YARNS

CASMERE MERINO SILK

DOUBLE KNITTING

ONE SIZE

MORE COLOURS
ON BACK PAGE



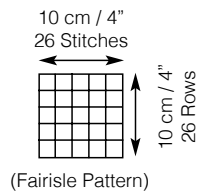
CASMERE MERINO SILK

DOUBLE KNITTING



“Knitting with this cashmere and silk blend feels so indulgent. And the patterns look like a designer brand. I can’t believe it’s so affordable.”

TENSION & NEEDLES



4mm / UK8 - USA6



Established in West Yorkshire in 1880, Sirdar is a British yarn company with a rich hand knitting heritage. Generations of families have grown up wearing Sirdar hand knitting yarns and designs.

Each season, we complement your favourite Sirdar classics with the latest yarn innovations and effects for fashionable knits. And we triple check every stylish Sirdar pattern to guarantee a successful knit with the recommended Sirdar yarn.

Sirdar Cashmere Merino Silk is a blend of pure silk, extra fine merino wool and the softest Himalayan cashmere, perfect for sophisticated womenswear. In a palette of grown-up, flattering shades inspired by the grandest of English estates, everything about this yarn whispers luxury.

TRY THESE SHADES

Turn to the back page to choose your favourite.



406 Soft Pewter



416 Orchard Red



417 Saddle Brown



403 China Blue

MEASUREMENTS

Size Width x Length	70 cm x 24 cm (27½" x 9½")
Yarn A* No Balls	
Yarn B* No Balls	
Yarn C* No Balls	
Yarn D* No Balls	
Yarn E* No Balls	
Yarn	F005 Cashmere Merino Silk, DK, 50g, A shade 406 Soft Pewter, B shade 413 Morning Yellow, C shade 422 Sand Stone, D shade 405 Silver Grey and E shade 401 Waterlily.
You also need	1 Pair of 4mm (UK8 - USA6) Knitting Needles and 1 Pair of 3¼mm (UK10 - USA3) Knitting Needles.

*Average number of balls required when you use the specified Sirdar yarn and tension shown

CO-ORDINATE WITH SWEATER DESIGN N° 10309



STITCHES & ABBREVIATIONS

A - shade A

B - shade B

C - shade C

cm - centimetres

D - shade D

DK - double knitting

E - shade E

g - grammes

in - inch(es)

k - knit

mm - millimetres

p - purl

patt - pattern

rep - repeat

st(s) - stitch(es)

ws - wrong side

TIPS & TECHNIQUES FAIR ISLE TECHNIQUE

When working in more than one colour, where possible the colour not in use should be stranded loosely across back of work to retain elasticity of fabric.

When working from a chart read from right to left for odd numbered rows which are knit and from left to right for even numbered rows which are purl.

Using 3¼mm needles, thumb method and B, cast on 181 sts.

1st Row. * K1, p1, rep from * to last st, k1.

2nd Row. P1, * k1, p1, rep from * to end.

1st and 2nd rows set 1x1 rib.

Work in 1x1 rib for 3cm, (1¼in), ending with a ws row.

Change to 4mm needles and proceed as follows:-

1st Row. K2D, 1B, * 3D, 1B, rep from * to last 2 sts, 2D.

2nd Row. P1D, * 1B, 1C, 1B, 1D, rep from * to end.

1st and 2nd rows set position of fair isle patt.

Refer to chart and work from 3rd to 44th row.

Rep 1st and 2nd rows once more.

Change to 3¼mm needles and A.

Starting with 1st row of 1x1 rib work for 3cm, (1¼in), ending with a ws row.

Cast off in rib.

TO MAKE UP

Join back seam. Cover with a damp cloth and leave until dry. See ball band for washing and further care instructions.

Key



A



B



C



D

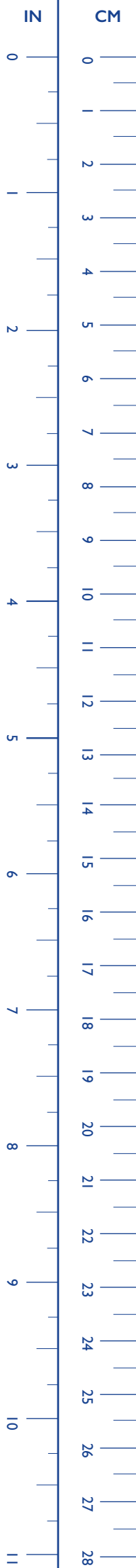
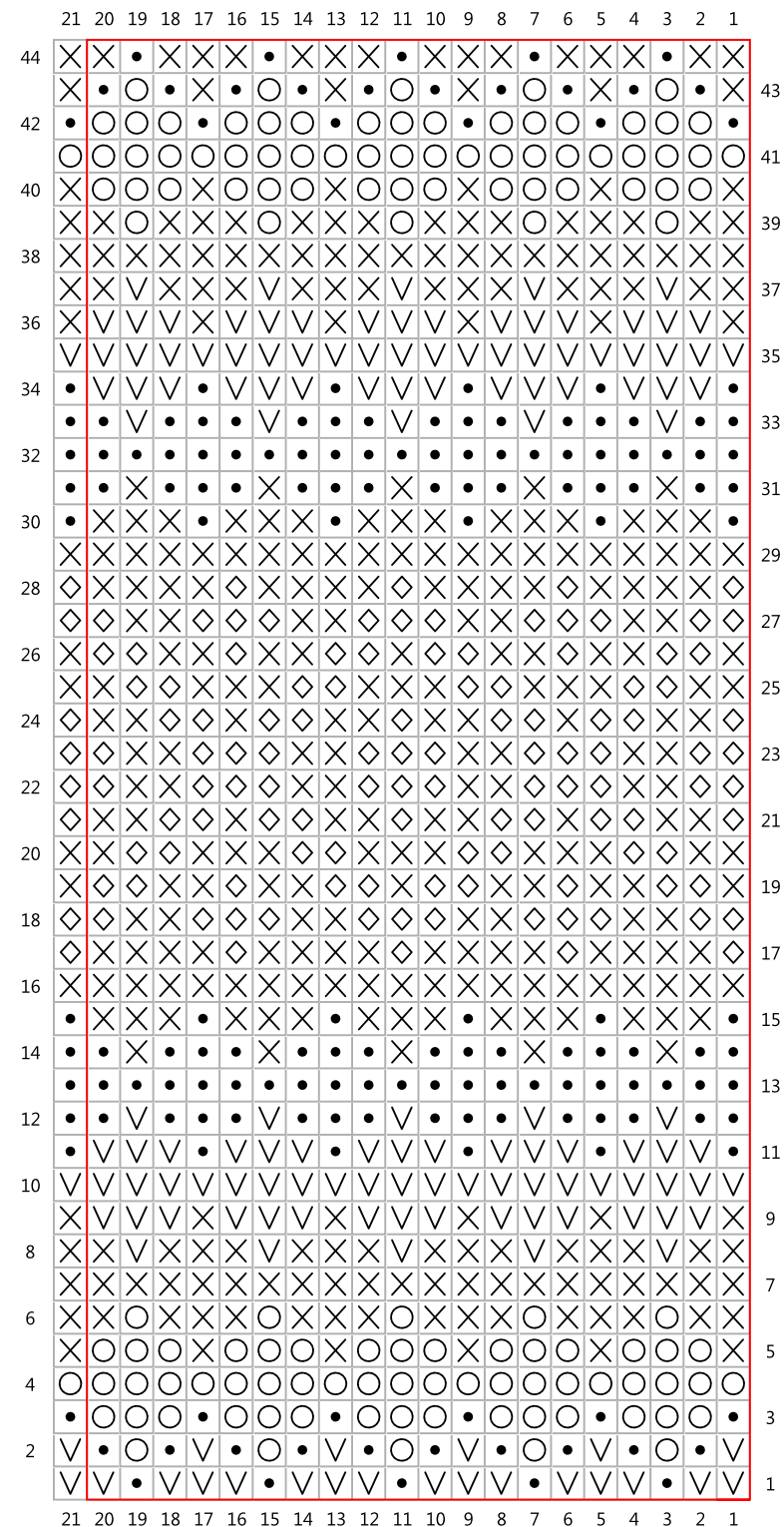


E



20 stitch repeat

KNITTING CHART



CASMERE MERINO SILK

DOUBLE KNITTING

CHOOSE YOUR FAVOURITE COLOUR

406 Soft Pewter



416 Orchard Red



417 Saddle Brown



403 China Blue

