

H a y f i e l d

5425



Baby Bonus DK




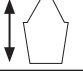

0-2 years

TOP in Hayfield **BABY BONUS DK**

5425

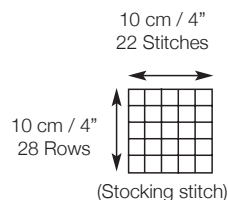
MEASUREMENTS

Follow the pattern instructions for your size

Age		0-3 months	3-6 months	6-9 months	9-12 months	12-18 months	18-24 months
Chest		42 cm 16½"	46 cm 18"	50 cm 19¾"	52 cm 20½"	54 cm 21¼"	56 cm 22"
Width		46 cm 18"	50 cm 19¾"	53.5 cm 21¼"	55 cm 21¾"	57 cm 22½"	61 cm 24"
Full Length		25 cm 9¾"	27 cm 10¾"	30 cm 11¾"	32 cm 12½"	34 cm 13½"	36 cm 14"
Sleeve Length		16 cm 6¼"	17 cm 6½"	18 cm 7"	20 cm 8"	22 cm 8¾"	25 cm 9¾"
Yarn* No Balls		1	1	2	2	2	2
Yarn You also need	F014 Hayfield Baby Bonus, DK, 100g, shade 580 Baby Yellow 1 pair of 4mm (UK8 – USA6) Knitting Needles, 1 pair of 3¼mm (UK10 – USA3) Knitting Needles and Stitch Holders						

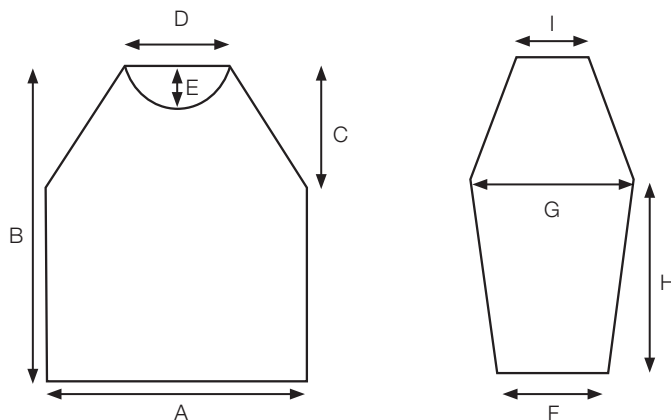
*Average number of balls required when you use the specified Hayfield yarn and tension shown below

TENSION & NEEDLES



PIECE MEASUREMENTS

- A 23 [25:27:27.5:28.5:30.5]cm
(9 [9¾:10¾:11:11¼:12]")
- B 25 [27:30:32:34:36]cm
(9¾ [10¾:11¾:12½:13½:14]")
(approximately)
- C 11 [12:13:13:14:15]cm
(4¼ [4¾:5¼:5¼:5½:6]")
(includes half of sleeve top)
- D 9.5 [10:11:12:12:12]cm
(3¾ [4:4¼:4¾:4¾:4¾]")
- E 5 [5:6:6:6:6]cm
(2 [2:2½:2½:2½:2½]")
(includes half of sleeve top)
- F 15 [15:15:16:16:17]cm
(6 [6:6:6¼:6¼:6½]")
- G 19.5 [20:21:22:23:24]cm
(7¾ [8:8¼:8¾:9:9½]")
- H 16 [17:18:20:22:25]cm
(6¼ [6½:7:8:8¾:9¾]")
- I 4 [4:5:5:5:5]cm
(1½ [1½:2:2:2:2]")



TIPS & TECHNIQUES

Read chart from right to left for odd numbered rows and left to right for even numbered rows

STITCHES & ABBREVIATIONS

alt - alternate
beg - beginning
cm - centimetres
cont - continue
dec - decrease(ing)
DK - double knitting
folll - following
g - grammes
in - inch(es)
inc - increase(ing)
k - knit
mm - millimetres
0 - no rows
p - purl
patt - pattern
rem - remain(ing)
rs - right side
st(s) - stitch(es)
tog - together
ws - wrong side

BACK

Using 3¼mm needles and thumb method cast on 51 [55:59:61:63:67] sts.

1st Row. Knit.

This row sets **g-st** (garter stitch).

Work 5 rows more in g-st.

Change to 4mm needles and proceed as follows:- **

1st Row. Knit.

2nd Row. Purl.

1st and 2nd rows set **st-st** (stocking stitch).

Work 34 [38:42:48:52:54] rows more in st-st.

Shape Raglan

Cast off 2 [2:3:3:3:3] sts at beg of next 2 rows. 47 [51:53:55:57:61] sts.

For 1st and 2nd sizes only

Work 2 rows dec 1 st at each end of every row. 43 [47] sts.

For all 6 sizes

Work 22 [24:28:28:30:34] rows dec 1 st at each end of next and every foll

alt row. 21 [23:25:27:27:27] sts.

Leave rem 21 [23:25:27:27:27] sts on a stitch holder.

FRONT

Work as given for Back to **.

Work 14 [18:22:28:32:34] rows in st-st.

Working from chart proceed as follows:-

1st Row. K19 [21:23:24:25:27], p1, k11, p1, k19 [21:23:24:25:27].

2nd Row. P19 [21:23:24:25:27], k2, p9, k2, p19 [21:23:24:25:27].

1st and 2nd row sets position of chart.

Work from 3rd to 22nd row of chart.

Shape Raglan

Working from 23rd to 28th row of chart proceed as follows:-

Cast off 2 [2:3:3:3:3] sts at beg of next 2 rows. 47 [51:53:55:57:61] sts.

For 1st and 2nd sizes only

Work 2 rows dec 1 st at each end of every row. 43 [47] sts.

For all 6 sizes

Work 2 [2:4:4:4:4] rows dec 1 st at each end of next and foll 0 [0:2nd:2nd:2nd:2nd] row.

41 [45:49:51:53:57] sts.

Working in st-st (throughout) proceed as follows:-

Work 12 [14:14:14:16:20] rows dec 1 st at each end of next and every foll alt row. 29 [31:35:37:37:37] sts.

Shape Neck

Next Row. K2tog, k8 [8:10:10:10:10], turn, leave rem 19 [21:23:25:25:25] sts on a stitch holder.

Working on these 9 [9:11:11:11:11] sts only proceed as follows:-

Next Row. Purl.

Work 2 rows dec 1 st at armhole edge in next row AT SAME TIME dec 1 st at neck edge in every row.

6 [6:8:8:8:8] sts.

Work 3 [3:5:5:5:5] rows dec 1 st at each end of next and every foll alt row. 2 sts.

Next Row. P2tog. Fasten off.

With rs facing, working on rem

19 [21:23:25:25:25] sts, slip 9 [11:11:13:13:13] sts onto a stitch holder, rejoin yarn to rem 10 [10:12:12:12:12] sts, knit to last 2 sts, k2tog. 9 [9:11:11:11:11] sts.

Next Row. Purl.

Work 2 rows dec 1 st at neck edge in every row AT SAME TIME dec 1 st at raglan edge in next row.

6 [6:8:8:8:8] sts.

Work 3 [3:5:5:5:5] rows dec 1 st at each end of next and every foll alt row. 2 sts.

Next Row. P2tog. Fasten off.

SLEEVES (Both alike)

Using 3¼mm needles and thumb method cast on 33 [33:33:35:35:37] sts, work 6 rows in g-st.

Change to 4mm needles and proceed as follows:-

Working in st-st (throughout) inc 1 st at each end of 5th and every foll 6th [6th:4th:6th:6th:6th] row to 39 [45:41:49:51:45] sts.

For 1st, 3rd and 6th sizes only

Inc 1 st at each end of every foll 8th [6th:8th] to 43 [47:53] sts.

For all 6 sizes

Cont without shaping until sleeve measures 16 [17:18:20:22:25]cm, (6¼ [6½:7:8:8¾:9¾]in), ending with a ws row.

For all 6 sizes

Shape Raglan

Cast off 2 [2:3:3:3:3] sts at beg of next 2 rows. 39 [41:41:43:45:47] sts.

Work 6 [6:2:4:4:2] rows dec 1 st at each end of every row.

27 [29:37:35:37:43] sts.

For all 6 sizes

Work 18 [20:26:24:26:32] rows dec 1 st at each end of next and every foll alt row. 9 [9:11:11:11:11] sts.

Leave rem 9 [9:11:11:11:11] sts on a stitch holder.

NECKBAND

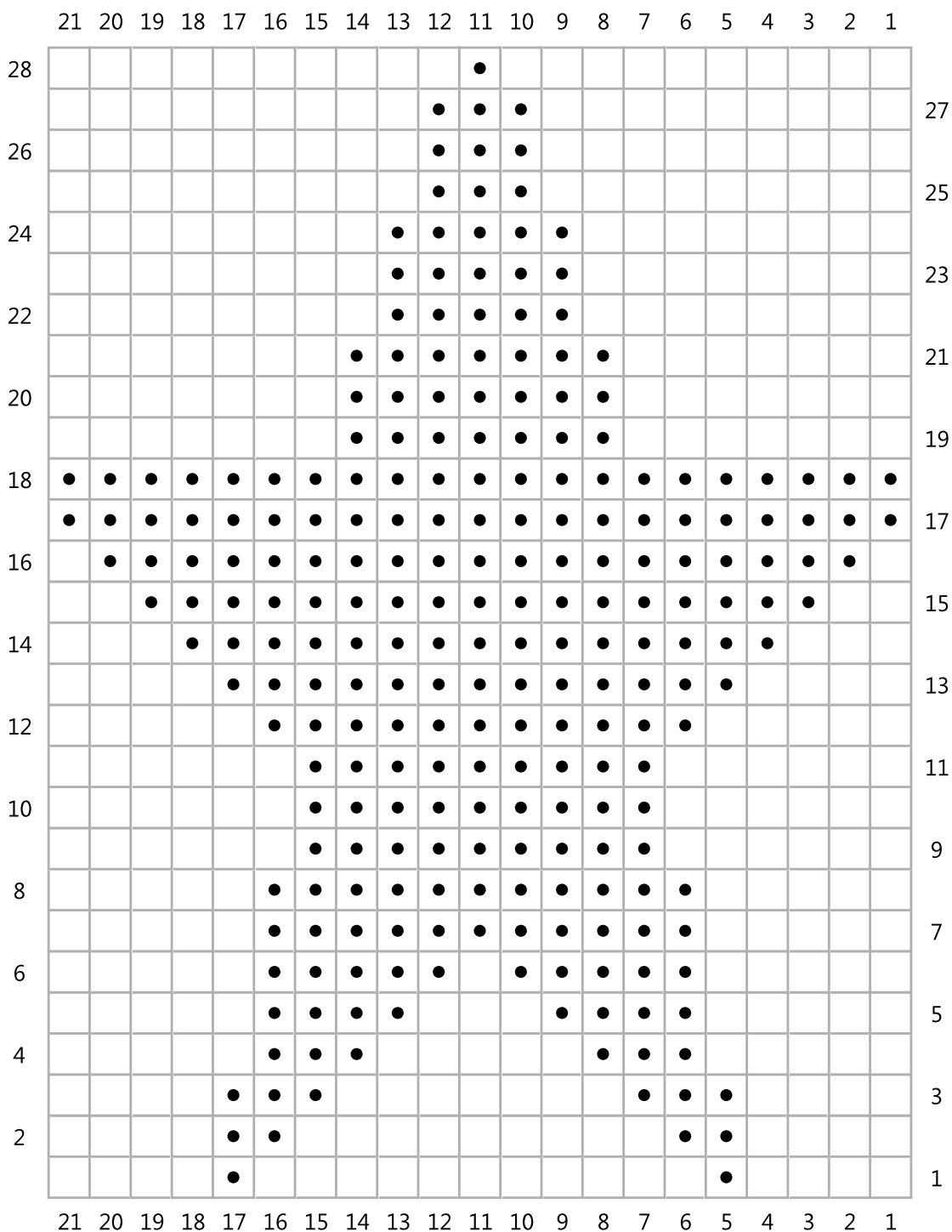
Join raglan seams leaving left back raglan open. With rs facing, using

3¼mm needles knit across 9 [9:11: 11:11:11] sts left on a stitch holder at top of left sleeve, pick up and knit 6 [6:8:8:8:8] sts evenly along left side of neck, knit across 9 [11:11:13: 13:13] sts left on a stitch holder at front of neck, pick up and knit 6 [6:8: 8:8:8] sts evenly along right side of neck, knit across 9 [9:11:11:

11:11] sts left on a stitch holder at top of right sleeve and knit across 21 [23: 25:27:27:27] sts left on a stitch holder at back of neck as follows:- k4 [5:4:7:7:7], inc in next st, (k3 [3:4: 3:3:3], inc in next st) 3 times, k4 [5:5: 7:7:7]. 64 [68:78:82:82:82] sts. Work 4 rows in g-st. Cast off knitways.

TO MAKE UP

Join left back raglan and neckband seams. Join side and sleeve seams. Pin out garment to the measurement given. Cover with damp cloths and leave until dry. See ball band for washing and further care instructions.



Key
 □ RS: knit
 □ WS: purl
 ● RS: purl
 □ WS: knit

in	
cm	1
	2
	3
	4
	5
	6
	7
	8
	9
	10
	11
	12
	13
	14
	15
	16
	17
	18
	19
	20
	21
	22
	23
	24
	25
	26

